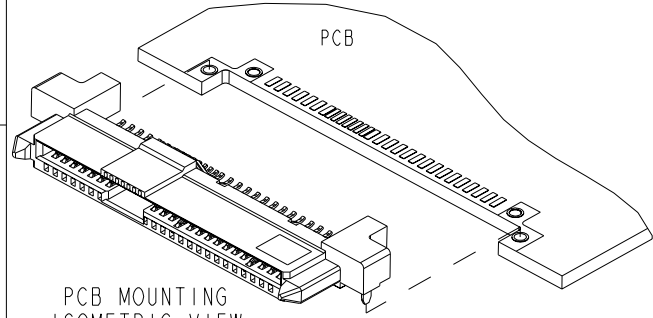
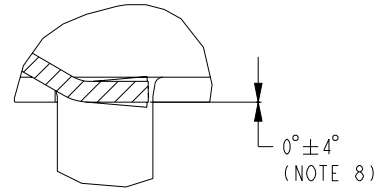


PRODUCT NO.	PACKAGING
10036587-001LF	TRAY
10036587-001TRLF	TAPE & REEL
10036587-002LF	TRAY
10036587-002LF	TAPE & REEL
10036587-003LF	TRAY

A

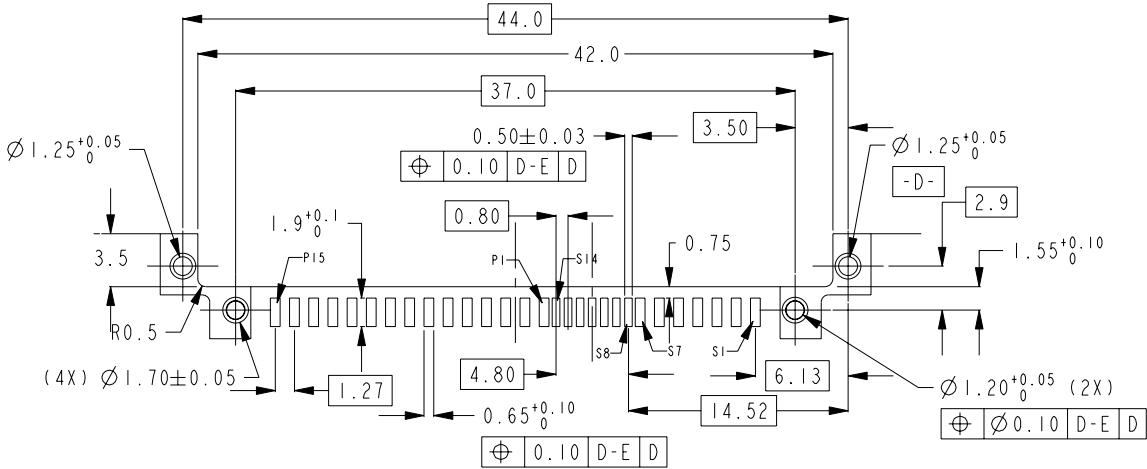


B



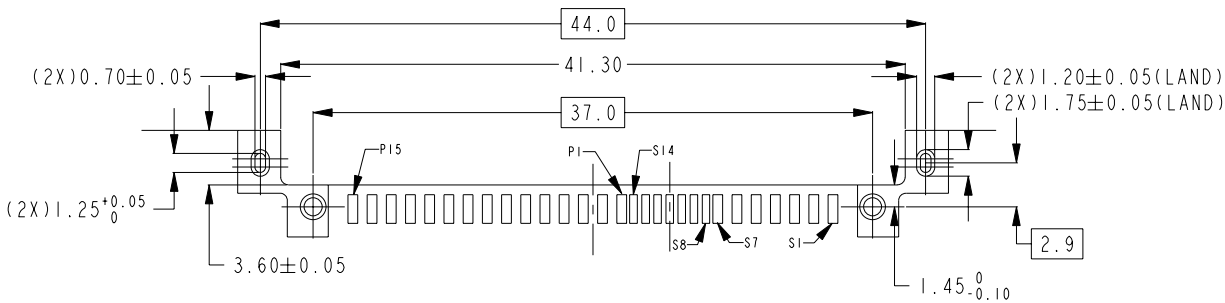
NOTES:-

- MATERIAL:
  - HOUSING : HIGH TEMP. THERMOPLASTIC, 94V-0, COLOR: BLACK
  - TERMINAL : COPPER ALLOY
  - HOLD DOWN: COPPER ALLOY
- FINISH:
  - TERMINAL : 30u" Au PLATING (CONTACT POINT) OVER 50u" MIN NICKEL
  - SOLDER TAIL: 100u" MIN TIN OVER 50u" MIN NICKEL
  - HOLD DOWN : 100u" MIN TIN OVER 50u" MIN NICKEL
- PACKAGING:
  - 10036587-XXXLF : REFER TO STANDARD PACKAGING IN TRAY
  - 10036587-XXXTRLF: REFER TO TAPE AND REEL PACKAGING
- THE HOUSING WILL WITHSTAND EXPOSURE TO 260 DEGREES CELSIUS PEAK TEMPERATURE FOR 10 SECONDS IN A CONVECTION, INFRE-RED OR VAPOUR PHASE REFLOW OVEN
- THIS PRODUCT MEETS EUROPEAN UNION DIRECTIVES AND OTHER COUNTRY REGULATIONS AS DESCRIBED IN GS-22-008
- PART NUMBERS ENDING IN 'LF' MEANS FOR TYPE 5 LEAD FREE IDENTIFICATION, P/N XXXXXXXX-XXXLF IS EQUIVALENT TO PREVIOUS P/N XXXXXXXX-XXX
- ALL SOLDER TAIL TO BE WITHIN 0.12mm, MAX COPLANARITY.
- ALL SOLDER TAILS ANGLE CONTROL SHALL BE 0° ± 4° AND APPLIED TO P/n 10036587-XXXLF.
- A SYMBOL BE NEXT TO ANY DIMENSION, VIEW, OR NOTE WHICH HAS BEEN MODIFIED WITH THE CURRENT DRAWING REVISION.



RECOMMENDED PCB LAYOUT

RECOMMENDED PCB T: 1.6mm  
TOLERANCE UNLESS OTHERWISE: ±0.1



ALTERNATIVE PCB LAYOUT

REFER TO ABOVE RECOMMENDED PCB LAYOUT FOR UNSPECIFIED DIMENSIONS  
RECOMMENDED PCB T: 1.6mm  
TOLERANCE UNLESS OTHERWISE: ±0.1



C

Copyright FCI.

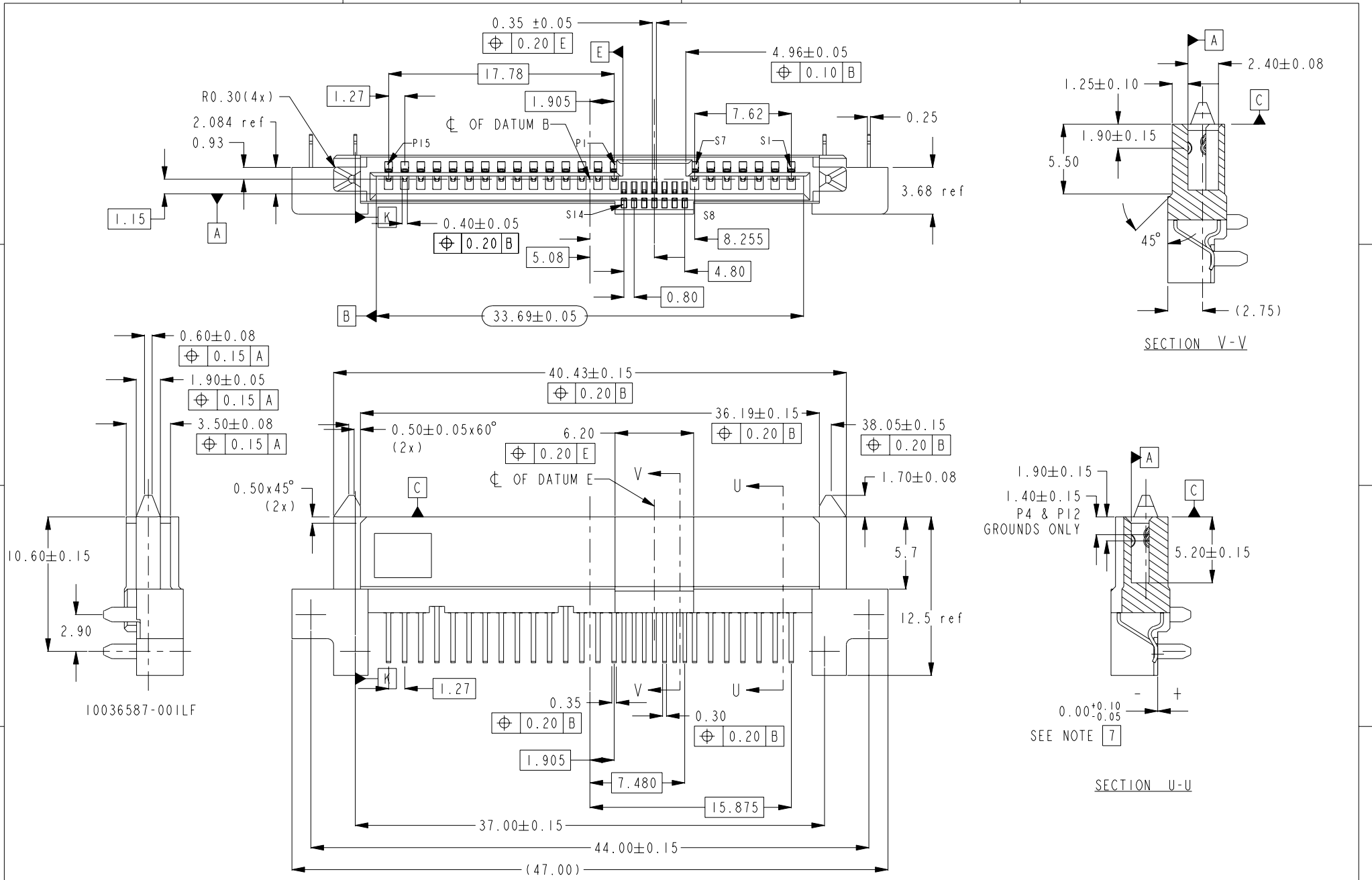
D

rev	ecn no	dr	date
J	S08-0359	BLLIM	2008-10-31
C	S05-0049	YE0SS	2005-02-22
D	S06-0010	TE0CS	2006-01-09
E	S06-0205	JTAN	2006-06-13
F	S07-0007	TAY	2007-01-08
G	S07-0159	TAY	2007-05-11
H	S08-0136	TAY	2008-05-06

www.fciconnect.com		surface ASME Y14.5	tolerance std ASME Y14.5	projection	MM
		TOLERANCES UNLESS OTHERWISE SPECIFIED			Scale 2:1
Dr	JOYCE PEH	2004-08-23	ANGULAR	size A4	ECN S08-0359
Eng	BL LIM	2008-10-31	LINEAR		
Chr	KP TAY	2008-10-31	0° ± 0.2°		
Appr	JOEY NG	2008-10-31	Product family		Spec ref
		SAS RECEPTACLE		dwg no	10036587
		R/A SMT ASSY			Rev. J
		catalog no		CUSTOMER	sheet 1 of 3



Copyright FCI.



REV F - 2006-04-11

	title	SAS RECEPTACLE	dwg no	10036587	Rev.	J
	catalog no	R/A SMT ASSY	CUSTOMER	sheet 2 of 3		

1

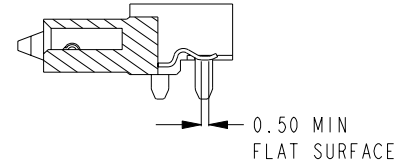
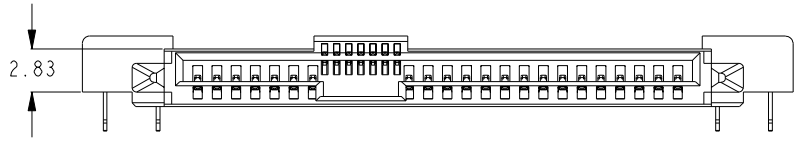
2

3

4

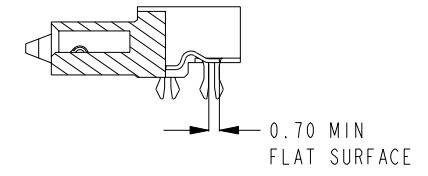
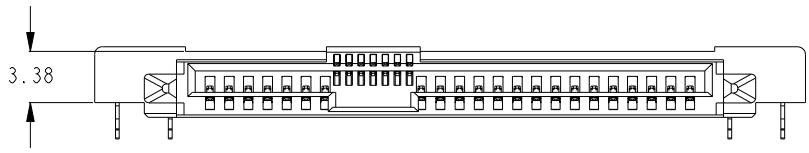
A

10036587-001LF



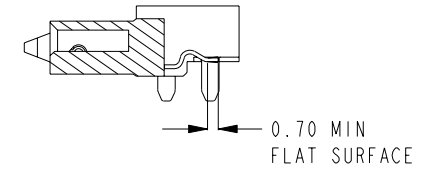
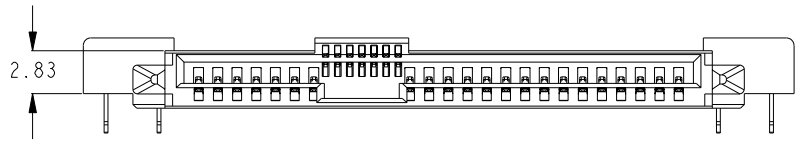
B

10036587-002LF



C

10036587-003LF



D

UNSPECIFIED DIMENSIONS PLEASE REFER TO PAGE 1 & 2



Copyright FCI.



title SAS RECEPTACLE  
R/A SMT ASSY  
catalog no

dwg no 10036587  
CUSTOMER

Rev. J

sheet 3 of 3